

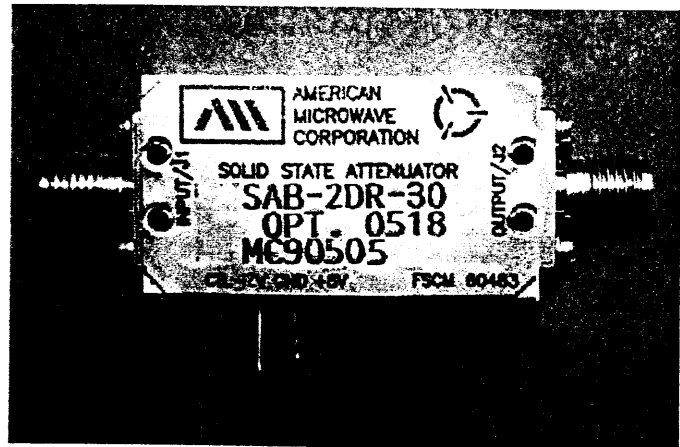


**AMERICAN MICROWAVE
CORPORATION**

SOLID STATE SWITCHED BIT 30 dB STEP ATTENUATOR

KEY FEATURES

- 0.5 GHz TO 18 GHz
(10MHz to 18GHz optional)
- 30 dB STEP
- HIGH SPEED
- TTL LOGIC COMPATIBLE
- SURFACE MOUNTABLE



AMC MODEL No: SAB-2DR-30 OPTION 0518

SPECIFICATIONS: (REFLECTIVE)

- | | | |
|-----------------------------------|---|--|
| • FREQUENCY RANGE | : | 0.5 GHz to 18 GHz (10MHz to 18GHz Optional) |
| • INSERTION LOSS (LOGIC f0') | : | 3.0 dB MAX. 2.8 dB TYP. |
| • STEP ATTENUATION (LOGIC f1') | : | 30 dB ±1.5 dB |
| • VSWR | : | 2.0:1 MAX |
| • SWITCHING SPEED | : | "RISE" 10nS MAX., 5nS TYP. |
| | : | "FALL" 10nS MAX., 5nS TYP. |
| | : | "ON" 50nS MAX., 40nS TYP. |
| | : | "OFF" 50nS MAX., 40nS TYP. |
| • CONTROL | : | Single Control (Independent control available) |
| • VIDEO TRANSIENTS | : | ≤3.0 V Peak to Peak, 300 MHz Bandwidth |
| | : | ≤300 mV Peak to Peak, 20 MHz Bandwidth |
| • RF INPUT POWER | : | +20dBm Operating, 1 Watt Survival (Other power Levels available) |
| • DC POWER SUPPLY | : | +5vdc @ +100mA MAX. |
| (Other supply voltages available) | : | -12vdc @ -60mA MAX. |
| • SIZE | : | 1.30" X 0.70" X 0.4" |
| • WEIGHT | : | ≤ 0.75 oz. |

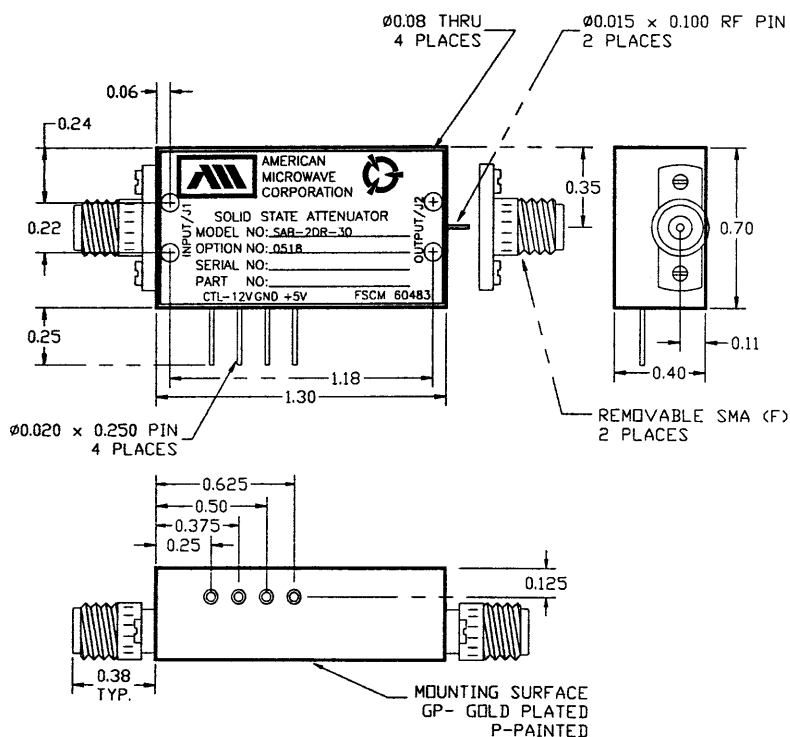
JULY 7, 1999

7311 G GROVE ROAD, FREDERICK, MARYLAND 21704 • Tel. (301) 662-4700 • Fax (301) 662-4938



SUMMARY TEST DATA

MODEL NUMBER : SAB-2DR-30 OPTION 0518
SERIAL NUMBER : MC90505
ENGINEER : RENE AFABLE
VOLTAGE & CURRENT DRAW : +5vdc: +45.9mA; -12vdc: -49.4mA



ALL DIMENSIONS ARE IN INCHES

TOLERANCES:

X.XX ±0.020
 X.XXX ±0.010

ENVIRONMENTAL RATINGS:

- TEMPERATURE:..... -55°C TO +85°C (OPERATING)
-65°C TO +125°C (STORAGE)
- HUMIDITY:..... MIL-STD-202F, METHOD 103B COND. B
- SHOCK:..... MIL-STD-202F, METHOD 213B COND. B
- VIBRATION:..... MIL-STD-202F, METHOD 204D COND. B
- ALTITUDE:..... MIL-STD-202F, METHOD 105C COND. B
- TEMPERATURE CYCLE:..... MIL-STD-202F, METHOD 107D COND. A

NOTE: THE ABOVE SPECIFICATIONS ARE SUBJECT TO CHANGE OR REVISION.

JULY 7, 1999